

# Day Two Preview: Farm and Field Visits for the 2023 GAM



# Kerri Conway

Special Advisor to the Colorado State University (CSU) System Chancellor; Director of International Agriculture, CSU Spur; North American Agricultural Advisory Network (NAAAN) Secretariat



# Day Two Preview Panel: Farm and Field Visits for the 2023 GFRAS Meeting



**BRIAN COPPOM**  
Colorado Agricultural  
Future Loan Program  
Manager, Colorado  
Department of  
Agriculture



**AMY SCANES-WOLFE**  
Director of Community  
Outreach, Drylands  
Agroecology Research



**ROBERTO MEZA**  
Co-Founder, Emerald  
Gardens





COLORADO

Department of Agriculture

# Colorado

## Department of Agriculture -

*A history of collaboration*



*photo courtesy of Luke Munchrath*

COLORADO RANKS **1<sup>ST</sup>** IN PROSO MILLET



1.4 BILLION EGGS



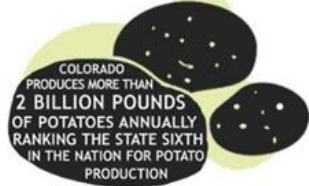
40 AQUACULTURE PRODUCERS



COLORADO PRODUCERS HARVEST MORE THAN 1 MILLION ACRES OF CORN



COLORADO MARKET SHEEP AND LAMBS RANK 2<sup>ND</sup> IN THE NATION  
COLORADO RANKS 4<sup>TH</sup> IN WOOL PRODUCTION



COLORADO PRODUCES MORE THAN 2 BILLION POUNDS OF POTATOES ANNUALLY RANKING THE STATE SIXTH IN THE NATION FOR POTATO PRODUCTION



160 LICENSED WINERIES

# COLORADO AGRICULTURE FACTS



750,000 PIGS IN COLORADO



\$47B

CONTRIBUTED ANNUALLY TO THE STATE'S ECONOMY BY COLORADO'S AGRIBUSINESSES



31,000 BEE COLONIES



195,000 JOBS



39,000 COLORADO FARMS AND RANCHES



COLORADO FARMERS AND RANCHERS HELP TO FEED THE WORLD EXPORTING NEARLY \$2 BILLION IN PRODUCTS



COLORADO HAS 2.8 MILLION HEAD OF CATTLE



115 MILLION POUNDS OF ONIONS



COLORADO PRODUCES 30 MILLION POUNDS OF PEACHES



COLORADO RANKS 6<sup>TH</sup> IN THE NATION FOR SUNFLOWER PRODUCTION

COLORADO AGRICULTURE IS MORE THAN JUST FOOD. FARMERS AND RANCHERS HELP CREATE PRODUCTS IN CONSTRUCTION, MANUFACTURING, HEALTH CARE, EDUCATION, TRANSPORTATION, AND PERSONAL CARE, INCLUDING X-RAY FILM, PAPER, SHOES, SOAPS, COSMETICS, HYDRAULIC BRAKE FLUID, BALL BEARINGS, BANDAGES, PIANO KEYS, PLASTICS, INSULATION, LINOLEUM, CRAYONS, FOOTBALLS, TIRES, PERFUME, DETERGENTS AND SHAVING CREAM.



**COLORADO**  
Department of Agriculture

1862

1870

1876

1887

1917



**MORRILL  
ACT**

**CSU  
Founded**

**Ag Exp  
Stations**

**Cooperative  
Extension**

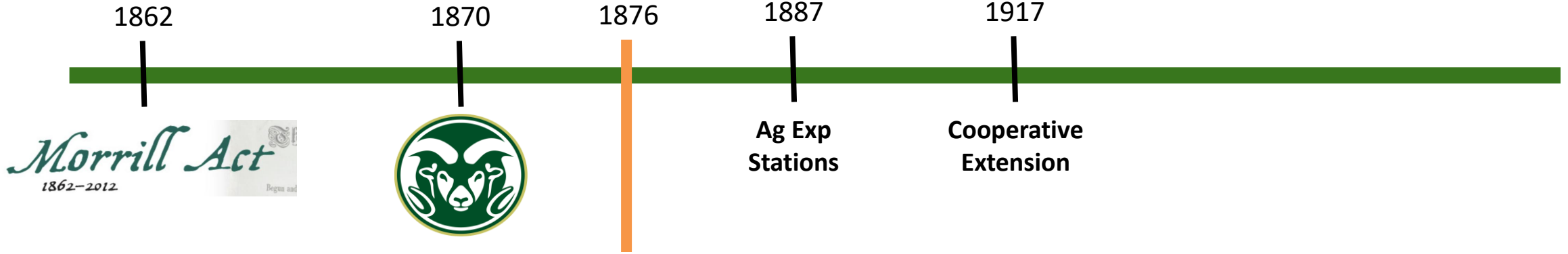


**COLORADO  
STATEHOOD**

- Land Grant System
- 90,000 Acres granted



**COLORADO**  
Department of Agriculture



**COLORADO**  
Department of Agriculture

# *Two Organizations, One Goal*



— Regulatory and Compliance —

**Stronger Colorado  
Agricultural System**



— Research and Education —



**COLORADO**  
Department of Agriculture



# CDA's eight divisions



Animal Health



Brand Inspection



Conservation Services



Colorado State Fair



Inspection and Consumer Services



Laboratory Services



Markets



Plant Industry



& Commissioner's Office

## WHAT DO WE REGULATE?



- Eggs



- Animal feed



- Custom meat plants



- Wild game processors



- Home food service plan operators



- Fertilizer



- Anhydrous ammonia



- Compost



- Farm products dealers



- Commodity handlers



- Grain warehouses



- Scales and other measuring devices



- Pricing & package weight accuracy



**COLORADO**

Department of Agriculture

# *Department priorities*



*photo courtesy of Jamie Johnston*



**COLORADO**  
Department of Agriculture

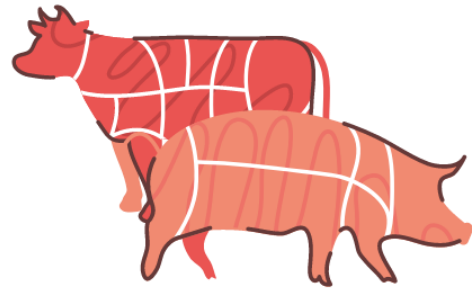


# Advancing Local Food Access



**COLORADO**  
Department of Agriculture

# Advancing Local Food Access



**Meat Processing  
Grant Assistance**

Colorado Department of Agriculture



**Community Food  
Access Program**

Colorado Department of Agriculture



**Specialty Crop  
Block Grants**

Colorado Department of Agriculture



**COLORADO**  
Department of Agriculture

# *Expanding Water-Resilient Agriculture*



**COLORADO**  
Department of Agriculture

# Expanding Water-Resilient Agriculture



America the Beautiful  
Grant

Colorado Department of Interior



ACRE3  
Energy Efficiency Grants

Colorado Department of Agriculture



Agricultural Drought &  
Climate Resilience Office

Colorado Department of Agriculture



**COLORADO**  
Department of Agriculture

# *Advancing Animal Health & Welfare*



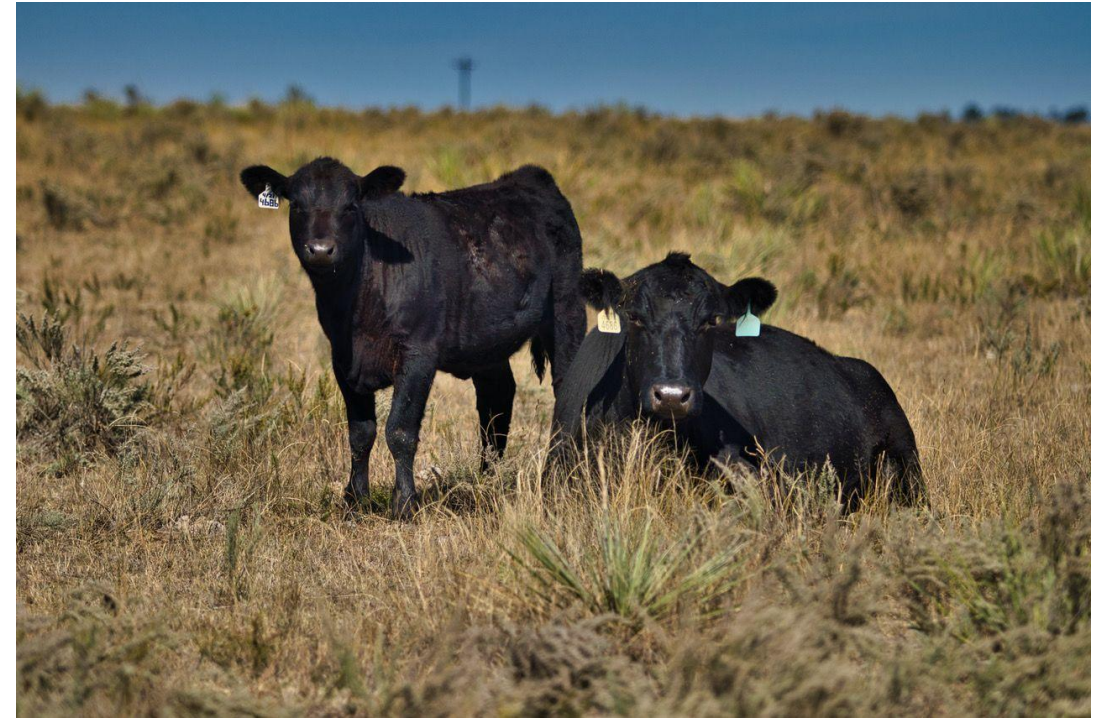
*photo courtesy of Tyson Arnold*



**COLORADO**  
Department of Agriculture

# *Animal Health Programs*

- Livestock and Animal Disease Control
- Animal Disease Traceability
- Emergency Preparedness and Response
  - 2022-23 Highly Pathogenic Avian Influenza Response
- Bureau of Animal Protection
- Alternative Livestock, Aquaculture, and Predator Control
- Animal Health Laboratory (Laboratory Services Division)
- Pet Animal Care Facilities Act (PACFA)



*Photo courtesy of Michael McCaffrey*



**COLORADO**  
Bureau of Animal Protection  
Department of Agriculture

**PACFA**  
Safeguarding Colorado's Pets







# *Supporting Future Generations of Agriculturalists*

*photo courtesy of Brandee Gillham*



**COLORADO**  
Department of Agriculture

# *Supporting Future Generations of Agriculturalists*



**Colorado Agricultural  
Future Loan Program**

Colorado Department of Agriculture



**Agricultural Workforce  
Development Program**

Colorado Department of Agriculture



**NextGen Agricultural  
Leadership Program**

Colorado Department of Agriculture



**Family Farm Transition  
Program**

Colorado Department of Agriculture



**COLORADO**  
Department of Agriculture

# *Thank you!*



*photo courtesy of Brandee Gillham*



**COLORADO**  
Department of Agriculture

# Drylands Agroecology Research

Amy Scanes-Wolfe  
Director of Community Outreach



DAR's Pilot Project

# Elk Run Farm

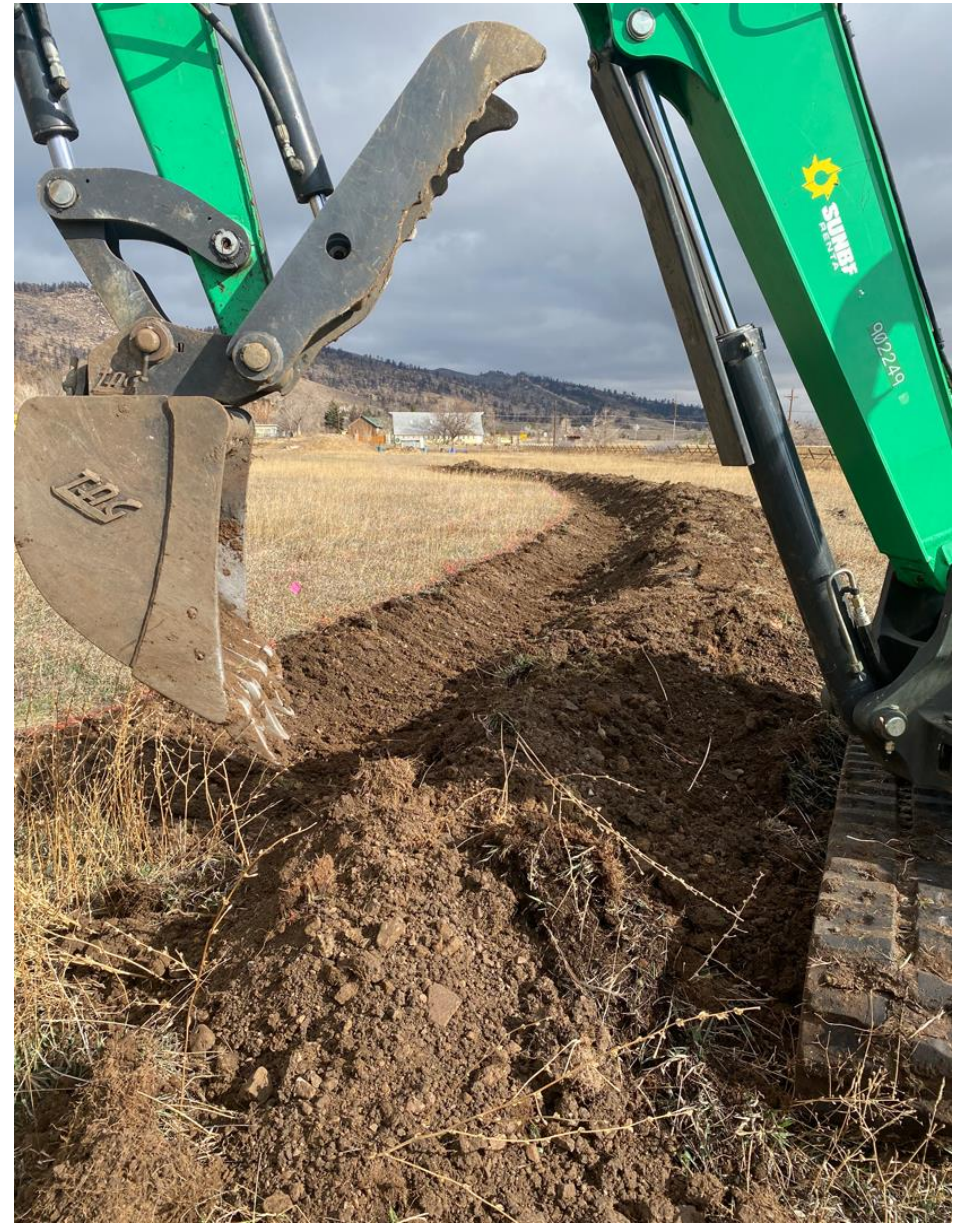
Regenerating 14 Acres of Degraded Land



# Step 1: Our Earthworks Strategies Bring Water Back to the Land

## Keyline Design

Terraforming earthworks slow, spread, and sink water, shifting its power from erosion to regeneration.





# Contour Swales at Elk Run Farm



# Dryland Agroforestry

950 Trees & Shrubs

4 Years

No Irrigation

**79% SURVIVAL**





# Native & Adapted Fruits

## Nitrogen Fixing Nurse Plants



Total # By Species	
Antonovka Apple	215
Bartlett Pear	156
American Plum	68
Manchurian Apricot	22
Hazelnut	30
Golden Currant	13
Red Mulberry	30
Elderberry	13
Nanking Cherry	12
Siberian Pea Shrub	100
False Indigo	140
Honey Locust	25
<b>Total</b>	<b>824</b>



# Regenerative Grazing



# Scaled Agroecology: Ecosystem Development



The background is a solid teal color with a faint, repeating pattern of stylized leaves and branches in a slightly darker shade of teal. The leaves are simple, pointed shapes with a central vein, and the branches are curved lines.

**Thank you!**



# Emerald Gardens



# Day Two Preview Panel: Farm and Field Visits for the 2023 GFRAS Meeting



**BRIAN COPPOM**  
Colorado Agricultural  
Future Loan Program  
Manager, Colorado  
Department of  
Agriculture



**AMY SCANES-WOLFE**  
Director of Community  
Outreach, Drylands  
Agroecology Research



**ROBERTO MEZA**  
Co-Founder, Emerald  
Gardens

